



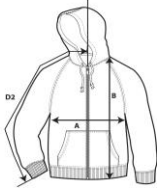
**71600**



**Adult Full-Zip Hooded Sweatshirt**

**DETAILS**

<b>Weight</b>	245.0 G/SqM
<b>Content</b>	75% Combed Ring Spun Cotton, 25% Polyester
<b>Features</b>	Fabric 30/1 Classic fit Tubular construction Unlined hood with White drawcords 0.6 cm Contrast White neck tape Back patch Twin-needle topstitch at neck 5.1 cm Rolled forward shoulder Contrast White metallic zipper Pouch pockets 1x1 Rib spandex cuffs and waistband Woven label Care label Oeko-Tex® Standard 100 Certified
<b>Sizes</b>	S-3XL
<b>Case Packs</b>	S - 3XL 24 PIECES
<b>Colours</b>	9
<b>SKU's</b>	54



**SPECIFICATIONS**

Centimeters	Tol-	Tol+	S	M	L	XL	2XL	3XL
<b>Chest (A)</b>	1.905	1.905	48.895	53.975	59.055	64.135	69.215	74.295
<b>Length from HPS (B)</b>	2.540	2.540	69.850	72.390	74.930	77.470	80.010	82.550
<b>Sleeve length (centre back) (D2)</b>	2.540	2.540	85.725	88.265	90.805	93.345	95.885	98.425
Inches	Tol-	Tol+	S	M	L	XL	2XL	3XL
<b>Chest (A)</b>	0.750	0.750	19.250	21.250	23.250	25.250	27.250	29.250
<b>Length from HPS (B)</b>	1.000	1.000	27.500	28.500	29.500	30.500	31.500	32.500
<b>Sleeve length (centre back) (D2)</b>	1.000	1.000	33.750	34.750	35.750	36.750	37.750	38.750

**S-3XL**

COLOURS	Code	Comments
Black	036	
Charcoal	042	
City Green	303	
Green Apple	302	
Heather Grey	346	70% Cotton, 30% Polyester
Independence Red	339	
Navy	032	
Royal Blue	051	
White	030	

**CHANGES**

Total Net Change 0 SKU's