



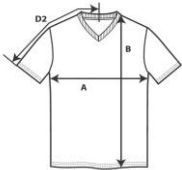
**6752**



**Adult Tri-Blend V-Neck Tee**

**DETAILS**

<b>Weight</b>	159.0 G/SqM
<b>Content</b>	50% Polyester, 25% Combed Ring Spun Cotton, 25% Rayon
<b>Features</b>	Fabric 30/1 High stitch density for smoother printing surface Semi-fitted Side seam construction Shoulder-to-shoulder tape and 1.5 cm seamed Mitred v-neck collar Single-needle topstitched front neck Twin-needle sleeve and bottom hem TearAway label Oeko-Tex® Standard 100 Certified
<b>Sizes</b>	XS-2XL
<b>Case Packs</b>	XS - 2XL 36 PIECES
<b>Colours</b>	8
<b>SKU's</b>	48



**SPECIFICATIONS**

	<b>Tol-</b>	<b>Tol+</b>	<b>XS</b>	<b>S</b>	<b>M</b>	<b>L</b>	<b>XL</b>	<b>2XL</b>
<b>Centimeters</b>								
<b>Chest (A)</b>	1.905	1.905	40.640	45.720	50.800	55.880	60.960	66.040
<b>Length from HPS (B)</b>	2.540	2.540	66.040	68.580	71.120	73.660	76.200	78.740
<b>Sleeve length (centre back) (D2)</b>	1.905	1.905	36.830	40.005	43.180	46.355	49.530	52.705
<b>Inches</b>								
<b>Chest (A)</b>	0.750	0.750	16.000	18.000	20.000	22.000	24.000	26.000
<b>Length from HPS (B)</b>	1.000	1.000	26.000	27.000	28.000	29.000	30.000	31.000
<b>Sleeve length (centre back) (D2)</b>	0.750	0.750	14.500	15.750	17.000	18.250	19.500	20.750

**XS-3XL**

<b>COLOURS</b>	Code
Black	036
Heather Aubergine	479
Heather Blue	321
Heather Dark Grey	334
Heather Galapagos Blue	480
Heather Grey	346
Heather Red	234
White	030

**CHANGES**

Total Net Change 0 SKU's