



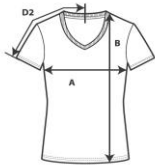
392



Women's Featherweight V-Neck Tee

DETAILS

Weight	110.0 G/SqM
Content	100% Ring Spun Cotton
Features	Fabric 40/1 Semi-fitted contoured silhouette with side seam and display tape Single-needle seamed collar Twin-needle sleeve and bottom hem TearAway label Oeko-Tex® Standard 100 Certified
Sizes	XS-2XL
Case Packs	LXS - LXL 72 PIECES L2XL 36 PIECES
Colours	13
SKU's	78



SPECIFICATIONS

Centimeters	Tol-	Tol+	XS	S	M	L	XL	2XL
Chest (A)	1.905	1.905	39.370	43.180	45.720	50.800	55.880	58.420
Length from HPS (B)	2.540	2.540	66.040	66.040	68.580	71.120	73.660	77.470
Sleeve length (centre back) (D2)	1.905	1.905	34.925	34.925	34.465	41.275	43.815	46.355
Inches	Tol-	Tol+	XS	S	M	L	XL	2XL
Chest (A)	0.750	0.750	15.500	17.000	18.000	20.000	22.000	23.000
Length from HPS (B)	1.000	1.000	25.500	26.000	27.000	28.000	29.000	30.500
Sleeve length (centre back) (D2)	0.750	0.750	13.500	13.750	14.750	16.250	17.250	18.250

XS-2XL

COLOURS	Code	
Black	036	
Caribbean Blue	308	
Coral	348	
Green Apple	302	
Heather Dark Grey	334	35% Cotton, 65% Polyester
Heather Purple	232	35% Cotton, 65% Polyester
Hot Pink	299	
Lemon Zest	331	
Navy	032	
Raspberry	336	
Red	338	
Silver	333	
White	030	

CHANGES

Total Net Change 0 SKU's