



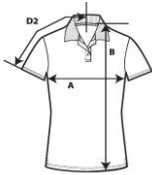
# 6280L



## Women's Double Pique Polo

### DETAILS

<b>Weight</b>	210.0 G/SqM
<b>Content</b>	100% Ring Spun Cotton
<b>Features</b>	Fabric 30/1 Semi-fitted contoured silhouette with side seam and 2.5 cm side vents Rib contoured collar and hemmed sleeves Woven label Care label Three dyed-to-match buttons (some colours have a Contrast colour placket and collar) Oeko-Tex® Standard 100 Certified
<b>Sizes</b>	S-2XL
<b>Case Packs</b>	LS - L2XL 36 PIECES
<b>Colours</b>	17
<b>SKU's</b>	85



### SPECIFICATIONS

Centimeters	Tol-	Tol+	S	M	L	XL	2XL
<b>Chest (A)</b>	1.905	1.905	41.910	45.085	50.165	53.975	58.420
<b>Length from HPS (B)</b>	2.540	2.540	64.770	67.310	69.850	72.390	74.930
<b>Sleeve length (centre back) (D2)</b>	1.905	1.905	38.100	39.370	41.275	43.180	45.720
Inches	Tol-	Tol+	S	M	L	XL	2XL
<b>Chest (A)</b>	0.750	0.750	16.500	17.750	19.750	21.250	23.000
<b>Length from HPS (B)</b>	1.000	1.000	25.500	26.500	27.500	28.500	29.500
<b>Sleeve length (centre back) (D2)</b>	0.750	0.750	15.000	15.500	16.250	17.000	18.000

### S-2XL

COLOURS	Code	
Azalea	071	
Black	036	
Black / Charcoal	KB036	
Cobblestone	335	
Forest Green	033	
Heather Grey	346	90% Cotton, 10% Polyester
Key Lime	332	
Lemon Zest	331	
Mandarin Orange	315	
Maroon	327	
Navy	032	
Pool Blue	310	
Red	338	
Red / Navy	KA338	
Royal Blue	051	
White	030	
White / Navy	KA030	

### CHANGES

Total Net Change 0 SKU's